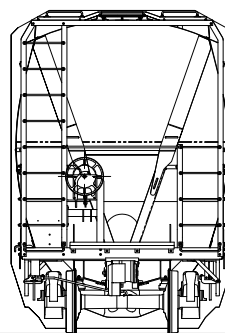
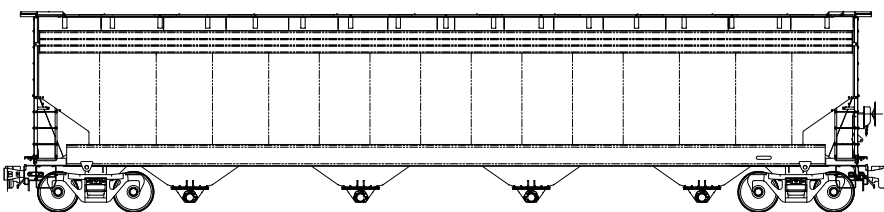
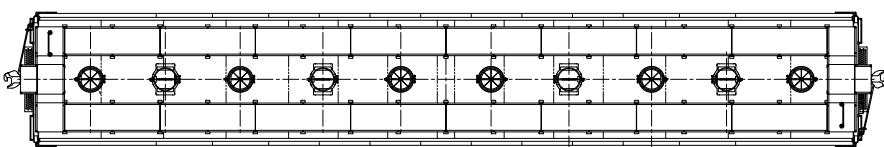




PLASTIC PELLET SERVICE

This 6,250 cubic foot capacity covered hopper is specially lined and equipped with four pneumatic gates, which make it ideally suited for the storage and transportation of plastics, resin, and other free-flowing, light-density products. From top hatches to bottom unloading gates, Greenbrier's 6250 cube cars are built to protect against even the smallest product contamination. Its curve sided, all welded design incorporates four aluminum pneumatic gates and a ten hatch arrangement (4 vented and 6 unvented).



20" vented hatch covers allow necessary ventilation, protecting against vacuum pull and product contamination.

4 aluminum pneumatic discharge outlets provide optimal product flow with clean-out.

6250 COVERED HOPPER

DIMENSIONS (APPROX.)

LENGTH, INSIDE	62' - 9 5/8"
LENGTH, OVER COUPLERS	67' - 10"
LENGTH, BETWEEN TRUCK CENTERS	54' - 2"
HEIGHT, EXTREME	15' - 6"
WIDTH, EXTREME	10' - 4 3/4"
DISCHARGE GATE SIZE	4X PNEUMATIC GATES
HATCH OPENING	10 OPENINGS AT 20" DIA.
CLEARANCE	AAR PLATE C

WEIGHT/CAPACITY (EST.)

LIGHT WEIGHT	66,500 LBS.
GROSS RAIL LOAD	286,000 LBS.
LOAD LIMIT	219,500 LBS.
CUBIC CAPACITY	6,250 CU. FT.

CURVE NEGOTIABILITY RADIUS

UNCOUPLED	180'
COUPLED TO LIKE CAR	256'
COUPLED TO BASE CAR	253'

DESIGNED AND BUILT TO AAR SPECIFICATION FOR M-1001

THESE GENERAL DIMENSIONS ARE REPRESENTATIVE AND SUBJECT TO CHANGE WITHOUT NOTICE AS REQUIRED BY CUSTOMER SPECIFICATIONS OR DESIGN IMPROVEMENTS BY THE GREENBRIER COS.