



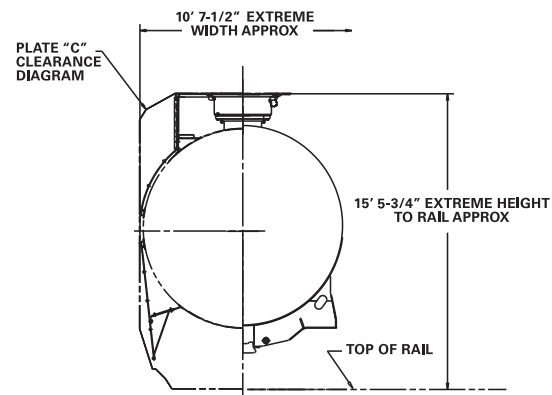
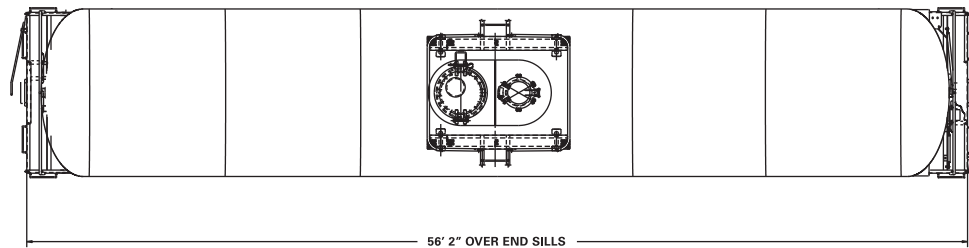
# 31,809 GALLON CRUDE OIL TANK CAR



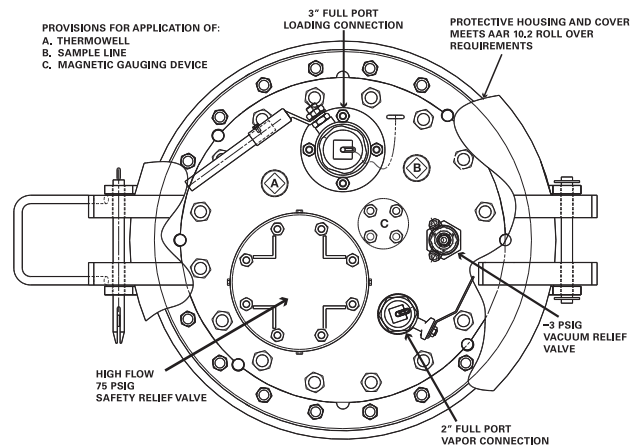
- Manufactured for 286,000 lb. capacity
- Meets AAR roll-over protection requirements for 49 CFR, Part 172, Packaging Groups I, II and III
- Equipped with half head-shields
- Engineered with normalized steel plate
- 4" full port, low profile, ARI 2040A bottom outlet valve
- Available equipped with 3 million-mile under-frame for high mileage service
- Top fittings arrangement with provisions for:
  - Thermowell
  - Sample Line
  - Magnetic Gauging Device

Proud to help move North America towards energy independence, ARI's 31,809 gallon, non-coiled, non-insulated, tank car is engineered to meet AAR & DOT requirements for transporting light crude oils.

## General Arrangement



## Top Fittings Arrangement



### GENERAL DATA

Specification Stenciled	DOT 111S100W1
Shell Full Capacity	31,809 Gallons
Gross Rail Load	286,000 lbs.
Estimated Lightweight	74,900 lbs.
Length Over Pulling Face	59' 3-7/16"
Truck Centers	45' 9-11/16"
Height, Extreme	15' 5-3/4"
Width, Extreme	10' 7-1/2"

### TANK

Class	DOT 111A100W1
Inside Diameter	122-1/2"
Tank Plate, Normalized	1/2"
Tank Slope	2" drop , approx.

### TANK FITTINGS

Manway Cover	Cast Steel, Gr. B, 6-bolt
Manway Nozzle	20"
Bottom Outlet Valve	ARI 2040A Ball Valve



**MANUFACTURING**  
**AMERICAN RAILCAR INDUSTRIES, INC.**

100 Clark Street, St. Charles, Missouri 63301  
(636) 940-6020 • FAX: (636) 940-6100

e-mail: [sales@americanrailcar.com](mailto:sales@americanrailcar.com) / website: [www.americanrailcar.com](http://www.americanrailcar.com)  
ARI parts available at: [www.americanrailcarparts.com](http://www.americanrailcarparts.com)

**AGILE ♦ RESPONSIVE ♦ INNOVATIVE**