

### Applications Water Treatment

- Turbidity Removal
- Filter Backwash
- Potable Water
- Lime Softening

### Applications Wastewater Treatment

- Coal Barge Cleaning
- Metal Plating
- Metal Painting
- Metal Galvanizing
- Biologic Polishing
- Wet Scrubbing
- Refinery Units
- Groundwater
- Filter Backwash

### Related Components for System Completion

- Oil Water Separator
- Flash Floc Mixing
- Chemical Dosing
- De-Emulsification
- Metal Precipitation
- pH Control
- Main Control Panels
- Holding Tanks
- Sludge Pumps
- Transfer Pumps
- Bag Filters
- Multi-Media Filters
- Oil Sorbent Filters
- Effluent Instruments
- Effluent Recording
- Platforms and Stairs

## The Clari-More —Inclined Plate Clarifier

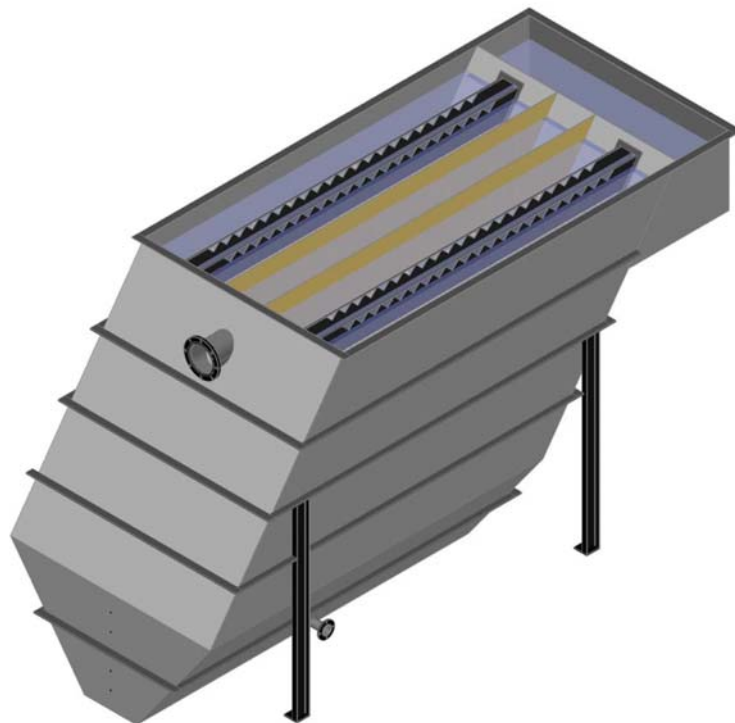
The Clari-More high performance Inclined Plate Clarifier system is excellent for separating and removing sinking solids, metallic floc, coagulated solids, sand and grit and any other settleable material from water or wastewater.

The Clari-More allows the sinking particles to settle on the inclined plates and slide downward off the bottom of the plate and into the sludge chamber. The ultra smooth inclined plates are angled at a steep 55 degrees suitable to cause the solids to slide downward while the treated water flow is upwards in a laminar flow pattern. The plates are spaced 2" standard with other spacing available. The greater the solids, the greater the plate spacing to prevent clogging and flushing out solids. The Clari-More Inclined Plate Clarifier has stainless steel adjustable effluent weir troughs to set even flow patterns thru the inclined plates to ensure the best possible utilization of the plate area. The Clari-More has a bottom sludge chamber with a slow rotating stainless steel thickener to thicken sludge as it gently moves it to the sludge outlet nozzle for periodic evacuation.

### APPLIED MECHANICAL TECHNOLOGY—A WORLD CLASS SUPPLIER

Applied Mechanical Technology is a *FULL SERVICE* supplier to the water/wastewater industry. We not only design and build the core technology of our systems and equipment but we also install, optimize, startup, train operators and service them too. If you need a simple oil water separator—or a complete industrial wastewater system, Applied Mechanical Technology has the solution.

### Value by Design—High Performance and Low Cost



**APPLIED MECHANICAL  
TECHNOLOGY L.L.C.**  
WATER / WASTEWATER DIVISION

PO Box 530  
135 Industrial Dr  
Mokenca IL 60954

Phone: 815-472-2700  
Fax: 815-472-2930

[www.AppliedMechTech.com](http://www.AppliedMechTech.com)