

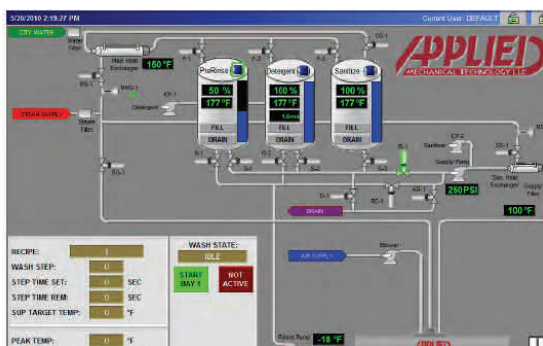
Applied Mechanical Technology  
 135 Industrial Dr.  
 Momence IL., 60954  
 Tel: 815-472-2700  
 Toll Free: 877-489-2681  
[www.AppliedMechTech.com](http://www.AppliedMechTech.com)



## Control System—Food & Chemical Tank Wash

**Tank Wash Control System** - The most advanced Tank Wash Control System available. This State of The Art system provides all the control flexibility needed for today's most demanding tank trailer cleaning operations. With more easy to use features than any other control system you have complete control to make your cleaning operation more efficient than ever. The system with it's open architecture design basis makes it possible to customize to meet specific project requirements.

### Overview Screen



**Operator Friendly Navigation Display** - The Tank Wash Control System operator screens are easy to follow and provide complete system operation and data. Screens are easy to explore with the simple touch of a screen button.

**Four Levels of Security** - Security is peace of mind. The System provides four levels of security for operators & managers. ALL system information is visible to any operator, but various levels of security clearance are needed to edit various settings.

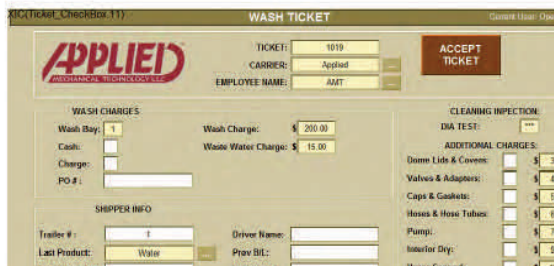
**Easy Recipe Editing and Selection** - Complete recipe editing (security level protected) means complete flexibility to handle all types of tank wash tasks to meet customer specifications. Getting the perfect recipe means saving time, energy and money.

### Recipe Screen



**Remote Monitoring Capable** - The System is capable of remote monitoring on a network and desktop computers or over the internet. Managers can access REAL time operating data from the network or from internet.

### Ticket Screen



**Real Time System Status Indication** - The operator screens are easily navigable to the many system status screens. Temperature, timing, valve position, pump operation, etc are all there for the operator to see in real time.

**Data Accumulation** - The System accumulates operating data critical to any tank wash management operation. Data is collected for reporting customer data, tank wash results, what product was washed, how long it was washed, etc.

**Integrated System Maintenance Notification** - The System tracks individual hourly usage and automatically notifies the operator when preventative maintenance is scheduled for pumps, valves, sensors etc. Helps keep your system up and running and minimizes costly system breakdowns.

**Component Part Number Display for Easy Servicing** - Operator Screens employ "popup" screens to inform the operator of critical component part information to make ordering parts quick and easy.

**Electronic Manual Supported Help System** - The System provides easy operator access to an extensive built in indexed help manual. Getting critical information has never been so easy. Any operator can access the manual right from the operator screen. No more lost manuals or lack of knowledge.

**In a World of Technology - Quality Makes the Difference**  
[www.AppliedMechTech.com](http://www.AppliedMechTech.com)