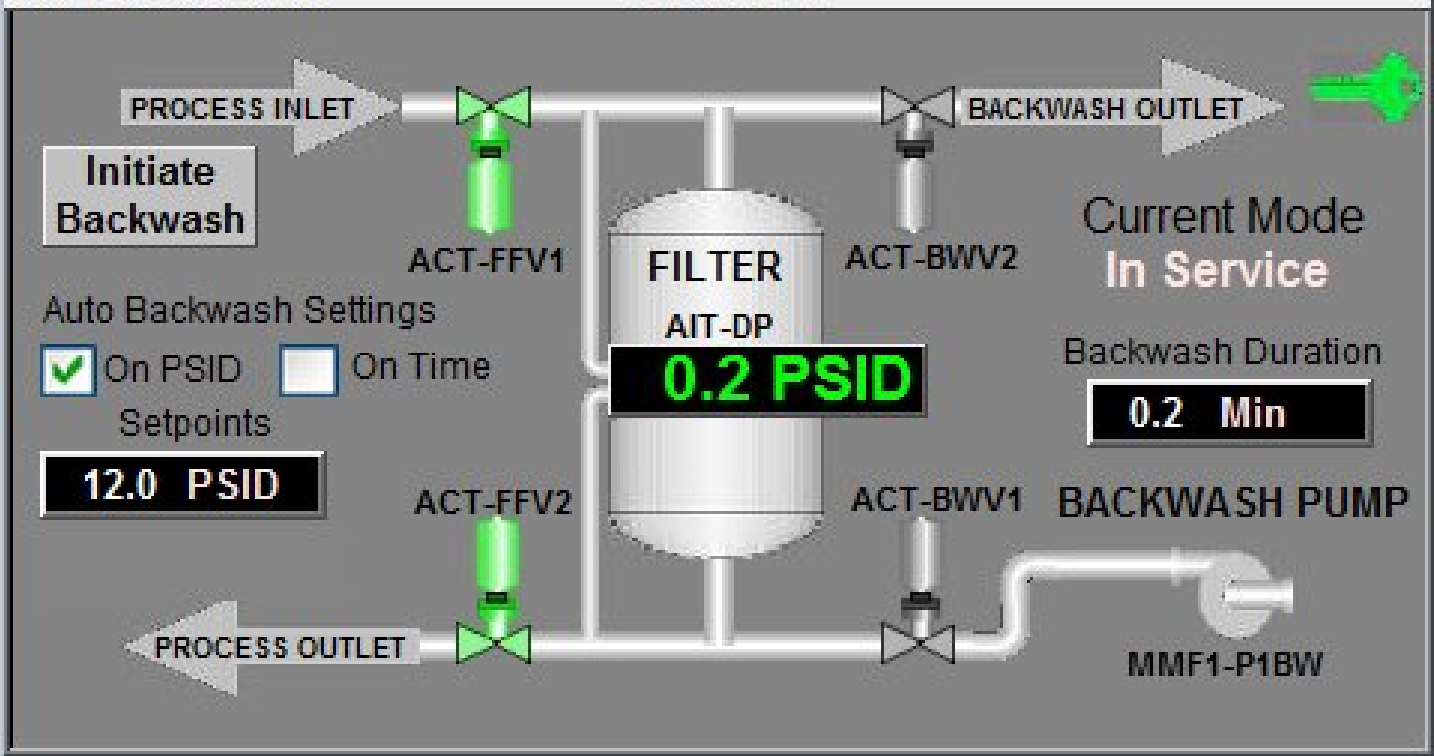


02/18/16 13:07

OVERVIEW

Current User: Admin



AIT-DP Filter Differential Pressure 🔑 X

0.14 PSI	Setpoints	Calibration
	High Alm 25.0 PSI	Current Raw PV 812
Alarms		Low Raw PV 797
Turn Alarms Off		= 0 PSI
High Alarm		High Raw PV 4000
		= 50 PSI
Ack		Average Function
Reset		Turn Averaging Off
		Sample 250 mS

APPLIED MECHANICAL MODEL MMF MULTI MEDIA FILTER. LAYERS OF GARNET, QUARTZ, AND FILTER SAND PROVIDE HIGH PERFORMANCE FILTERING. CAN BE USED FOR SAND AND/OR CARBON AND OR ORGANOCLEY FILTER MEDIA WITH OR WITHOUT BACKWASH.

TYPICAL FILTER CONTROL SETUP.

- THREE WAYS TO INITIATE BACKWASH.
 - 1) OPERATOR PUSH BUTTON
 - 2) DIFF PRESSURE
 - 3) TIMED
- AUTO BACKWASHING OF MULTI-CELL FILTER KEEPS SERVICE FLOW GOING DURING BACKWASH.



135 INDUSTRIAL DR
 MOMENCE IL. 815-472-2700
 WWW.APPLIEDMECHTECH.COM
 REPRESENTED BY:

System Security Login / Logout X

Current User: Admin

Select User: **Admin (ABCDEFGHIJKL)** ▼

Password: