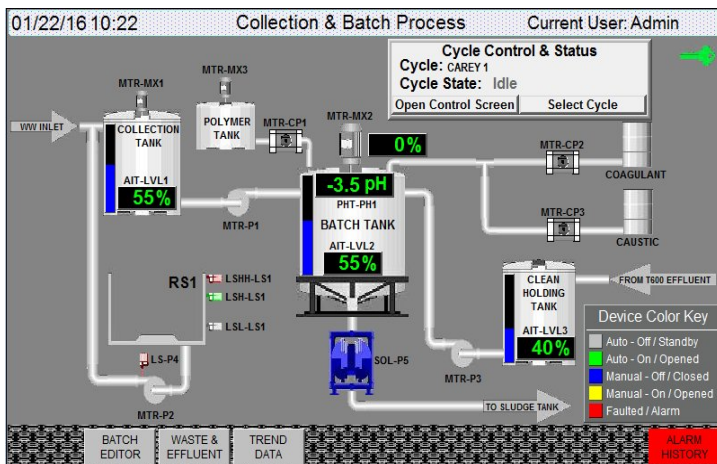


Control Systems—Sequencing Wastewater Batch

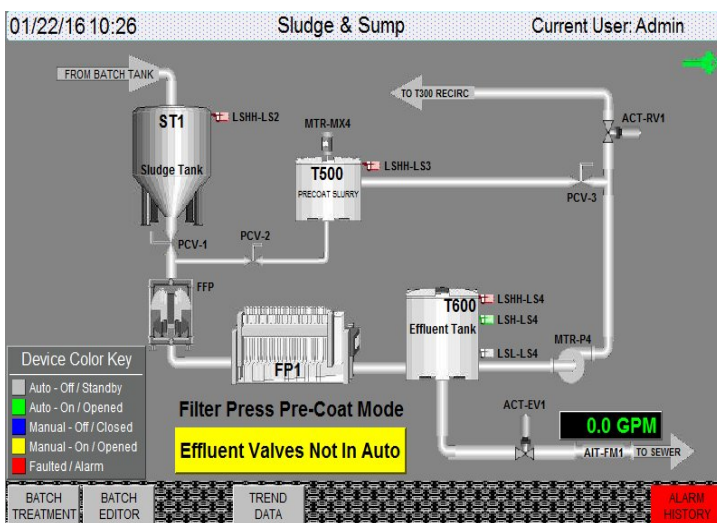
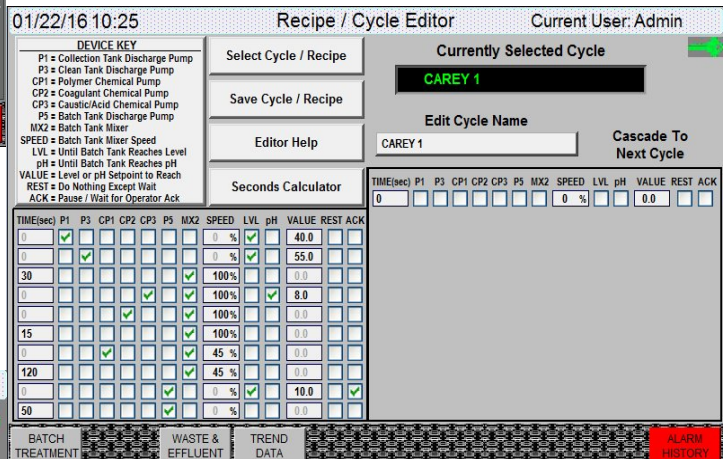
Sequencing Batch Wastewater Treatment System - Our Sequencing Batch Wastewater Treatment System is the most advanced batch treatment system available today. With its easily operator programmable sequencing treatment system the operator has complete control over dosing, mixer speeds, reaction times, chemicals used and essential rest periods and pauses. Each treatment “recipe” can be edited and saved for later use. Operator can input the bench treatability testing results and the controller will automatically determine the dosing pump durations. No guesswork. Every batch treated right—the first time.



Operator Friendly Navigation Display - The Control System operator screens are easy to follow and provide complete system operation and data. Screens are easy to follow and explore with the sim-

Multiple Levels of Security - (advanced models) Security is peace of mind. The System provides levels of security for operators & managers. All system information is always visible to any operator, but

Easy Cycle “Recipe” Editing and Selection - Complete recipe editing (security level protected) means complete flexibility to configure the batch as needed to achieve optimal operation and best possible discharge compliance. Recipes are saved for future use. Treating different batches is no problem.



Fully Automatic Calibration - Once the dosing pumps are calibrated with actual chemicals to be used the system takes it from there. As the operator inputs treatability data the controller calculates the dosing pump duration to achieve the desired dosing. If the project calls for chemical stoichiometrically, the system permits entering dosing in straight PPM as well. Once a cycle “recipe” is created it is saved for future use and can be edited at the supervisor level operator. This is the perfect system for treating batches especially if batches can vary. This is the most advanced batch calibration feature available anywhere!

System Maintenance Notification - (advanced models) The System tracks individual hourly usage and automatically notifies the operator when preventative maintenance is scheduled for pumps, sensors etc.